



DRAGADOS Y OBRAS PORTUARIAS S.A.

PRINCIPAL WORKS

INDEX

DREDGING AND REFULADOS	3
Salado River	Canal Emilio Mitre
Port Rawson	Canal Martín García
Ruta Nacional Nº 12	Caleta Olivia
Ruta Nacional Nº 168	Potabilisation establishment San Martín
PORT INFRASTRUCTURE	5
Port Rawson	Dock Camarones
Dock Comodoro Rivadavia	Lifting for ships
Port Piriápolis	Dock General Mosconi
DOCKING WORKS	6
Muelle Almirante Storni	Muelle Comandante Luis Piedrabuena
DUCTS	7
Emisario Mar del Plata	Drinking water treatment establishment San Martín
Gas pipeline Mesopotámico	
COASTAL TREATMENTS	8
Coastal Protection	Defense against floods
East Waterfront	Coastal Defense Paraná
VIALS	9
Ruta Nº 27	Ruta Nacional Nº 168
FOUNDATIONS	10
Port Loyola	Dock Comodoro Rivadavia
PRIVATE WORKS	11
DOCKS AND TERMINAL PORTS	11
Port Timbúes Terminal	Port General San Martín
DREDGING	11
Port Galván	Canal Dock Sud
FOUNDATIONS	12
Shipment Terminal	Arroyo Seco
SPECIAL WORKS	12
Canal Dock Sud	Dock Sud shipside West morro
OTHERS	13
Coal and Oil Port in Punta Loyola	

DREDGING AND REFULADOS



Salado River

Where Buenos Aires, Argentina.

Work Improving the river mouth of the Salado River - 1st stage.

Description 10 km canal opening to improve the river mouth of Salado river by dedging and refulado to embankments and construction of a bridge Hº Aº (light approx. 122 m) at the crossroads with Provincial Route 11.

Amount 9.508.517

Vol m3 52.000.000



Port Rawson

Where Chubut, Argentina.

Work Port Rawson's resuffle.

Description Construction of 2 breakwaters and dredging the access channel.

Amount 15.285.000

Vol m3 136.000



Ruta Nacional nº 168

Where Santa Fe, Argentina.

Work Ruta Nacional nº 168. Santa Cándida island.

Description 3 Km asphalt route construction (Asphaltic concrete; width: 7,30 m), 3 Km refulado's sand embankment and a bridge HºAº 120 m of length. Board width: 8,30 m. Execution of pillars de HºAº. Tending medium-voltage line: 13,2 Kw - Aprox. Length 3100 m. Illumination: 3500 m.

Amount 8.275.800

Vol m3 284.000



Ruta Nacional nº 12

Where Entre Ríos, Argentina.

Work Dredging and refulado for embankment on National Route nº 12. Paraná Guazú - Ceibas stretch.

Description Dredging by refulado for embankments. Realized by a cutter dredger the uncover of soft materials and refulado.

Amount 68.796.093

Vol m3 14.000.000



Canal Emilio Mitre

Where	Buenos Aires, Argentina.
Work	Re-dredging of Canal Emilio Mitre (Km 12 to 43,5).
Description	Material extraction (8,5 millions m3) in order to permit restoration of the operating conditions of the channel.
Amount	35.000.000
Vol m3	12.500.000



Canal Martín García

Where	Argentina / Uruguay.
Work	Dredging Concession, Signaling and Maintenance of the channel.
Description	Dredging and maintenance of navigation channel Martín García from Km 37 (Channel access) to Km 0 (Uruguay River). 110 km Beacon system installation on navigation channel.
Amount	180.243.049
Vol m3	35.000.000



Caleta Olivia

Where	Santa Cruz, Argentina.
Work	Landing tank ship with buoy rotating head in Caleta Olivia.
Description	Supply and installation of 1 buoy rotation head (10 m diameter) with complementary elements for crude oil charge in 60,000 tons ships and discharge of ballast anchored to 2,700 m of the coast with an 35-40m draft, depending on the tide. Provision, coating and laying of two pipes (large: 2,700 m each), 30" and 14" diameter for loading and unloading.
Amount	11.608.676



Potabilisation Establishment San Martín

Where	Buenos Aires, Argentina.
Work	Establishment of potabilisation extension in San Martín.
Description	Dredging of the trench, placement and covered of the prefabricated elements of the duct, plus the construction and placement of a electrical intake tower. Dredging for placement concrete pipes founded on piles in trenches under water.
Amount	20.055.253
Vol m3	500.000



PORT INFRASTRUCTURE



Port Rawson

Where	Chubut, Argentina.
Work	Remodeling of Puerto Rawson.
Description	Construction of 2 breakwaters and dredging of the access channel. Dock of H ^º A ^º on piles of large diameter (180 m length) for fishing boats.
Amount	15.285.000



Dock Comodoro Rivadavia

Where	Chubut, Argentina.
Work	Ending of Comodoro Rivadavia Dock.
Description	Shelter construction work with outer shell of acropods. Coastal dock and oversea and basin dredge. Supply and installation of defenses and bollards. Installation: drinking water, fire, lighting and prime mover.
Amount	29.478.623
Vol m3	410.500



Port Piriápolis

Where	Piriápolis, Uruguay.
Work	Extension of Puerto Piriápolis.
Description	Extension and construction of the port with stone breakwaters, concrete walls and complementary works. It includes dock extension for Buquebús entry and exit.
Amount	19.526.204



Dock Camarones

Where	Chubut, Argentina.
Work	Muelle camarones reparation.
Description	Gravity dock construction of H ^º A ^º , stone fill, shelter work, H ^º blocks (Core-Lock) and complementary works.
Amount	7.803.223



Lifting for ships

Where Buenos aires, Argentina.

Work Civil works constructions of synchronous lifting for ships and berth quay, No. 4 stand construction and bridges with 100 ton crane transit.

Description Digging and concreting of heads, prestressed beams, large diameter piles and slabs for bridges, harrow and synchronous ship lift.

Amount 20.445.774



Dock General Mosconi

Where Chubut, Argentina.

Work Adaptation of pipes trails and mountings lines.

Description Adaptation of pipes trails and mountings lines, removal of existing dock, construction and placement of tubular beams, loading and unloading platforms, systems against fire, water, lighting and services on the dock.

Amount 4.682.585



DOCKING WORKS

Dock Almirante Storni

Where Chubut, Argentina.

Work Structural recovery Capacity of massifs N, L, and M of Muelle Almirante Storni

Description Construction of 3 mooring massifs H⁹A⁹ on stilts.

Amount 2.410.888



Dock Comandante Luis Piedrabuena

Where Chubut, Argentina.

Work Mooring massifs on dock. Madryn Port.

Description Construction of 2 mooring massifs of H⁹A⁹ on slits.

Amount 600.000



DUCTS



Emisario Mar del Plata

Where Buenos Aires, Argentina.
Work Submarine outfall construction. Mar del Plata.
Description Submarine duct construction



Gas pipe Mesopotámico

Where Entre Ríos, Argentina.
Work Gas pipeline Mesopotámico.
Description Gas pipeline project and construction. Subfluvial crossing of the Paraná river with an 24" diameter and 32 km length duct, buried under water crossing 3 rivers and wetlands areas.
Amount 40.135.000
Vol m3 8.500.000



Drinking water treatment establishment San Martín

Where Buenos Aires, Argentina.
Work Expansion of the drinking water establishment on San Martín.
Description Dredging of the trench, placement and covered of prefabricated elements of the duct, plus the construction and placement of the intake tower. Dredging for placement concrete pipe founded on trench piles under water.
Amount 20.055.253
Vol m3 500.000



COASTAL TREATMENTS



Coastal protection

Where Misiones, Argentina.
Work Coastal protection work in Posadas, Garupa and Candelaria Locations in the edge of Argentina.
Description Coastal protection work, bridge construction, dock, recomposition of urban grid.
Amount 7.704.240
Vol m3 2.408.365



East waterfront

Where Misiones, Argentina.
Work East waterfront - Stage IV.
Description Construction of waterfront avenue and defense.



Defense against floods

Where Entre Ríos, Argentina.
Work Defense against floods on cities of Galeguay.
Description Defense construction.
Amount 15.330.000
Vol m3 1.330.000



Coastal defense Paraná

Where Entre Ríos, Argentina.
Work Stabilization gully and coastal defenses Paraná - 1a. Stage.
Description Coastal defense and complementary works: Electrical installation lighting, railings, landscaping, etc...
Amount 7.559.000
Vol m3 22.862



VIALS



Ruta n° 27

Where Tigre, Buenos Aires, Argentina.

Work Conexión road - link Liniers street - rtuta n° 27. Tract 1 a, b, c, d, 2 a and b.

Description Construction of road linking.

Amount 7.563.200

Vol m3 730.000



Ruta Nacional n° 168

Where Santa Fe, Argentina.

Work National Route n° 168. Santa Cándida Island.

Description 3 Km asphalt route construction (Asphaltic concrete; width: 7,30 m), 3 Km refulado's sand embankment and a bridge H²A² 120 m of length. Board width: 8,30 m. Execution of pillars de H²A². Tending medium-voltage line: 13,2 Kw - Aprox. Length 3100 m. Illumination: 3500 m. Pilars H²: 72.

Amount 8.275.800

Vol m3 284.000



FOUNDATIONS

Port Loyola

Where Santa Cruz, Argentina.

Work Carbonero Port construction and general commodity in Loyola Port.

Description Dock construction with a docking area for shipment of coal and oil with access viaduct.

Amount 116.576.500



Dock Comodoro Rivadavia

Where Chubut, Argentina.

Work Ending of Comodoro Rivadavia Dock.

Description Shelter construction work with outer shell of acropods. Coastal dock and oversea and basin dredge. Supply and installation of defenses and bollards. Installation: drinking water, fire, lighting and prime mover.

Amount 29.478.623

Vol m3 410.500



- PRIVATE WORKS-



DOCKS AND TERMINAL PORTS

Port Timbúes Terminal

Where	Santa Fe, Argentina.
Work	Timbúes terminal port, Noble shipment civil work.
Description	Civil work construction, shipment.
Amount	6.510.000



General Port San Martín

Where	Santa Fe, Argentina.
Work	Fertilizers new dock on San Martín General Port.
Description	Shipment civil works.
Amount	8.166



DREDGING

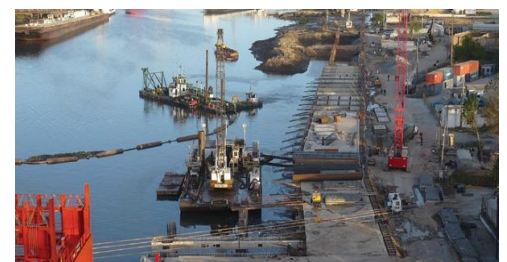
Port Galván

Where	Buenos Aires, Argentina.
Work	Dredging of the mooring area of the floating plant.
Description	Dredging and deepening of the area.
Amount	560.758
Vol m3	120.000



Canal Dock Sud

Where	Buenos Aires, Argentina.
Work	Dredging on Dock Sud Channel.
Description	Dredging works on the channel.
Amount	695.000
Vol m3	58.000



FOUNDATIONS



Shipment Terminal

Where	Santa Fe, Argentina.
Work	Dreyfus General Lagos shipment terminal.
Description	Grain Shipping terminal construction over the Paraná river. 95 m length pre-metallic transference gallery. Transference galleries and barges with metal structure on towers, pilings and heads.
Amount	4.756.000



Arroyo Seco

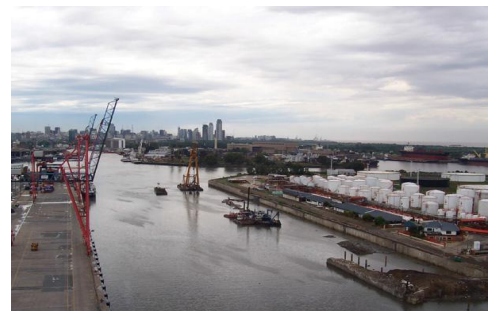
Where	Santa Fe, Argentina.
Work	Arroyo Seco dock reconstruction.
Description	Dock reconstruction and complementary works.
Amount	3.967.200



SPECIAL WORKS

Canal Dock Sud

Where	Buenos Aires, Argentina.
Work	Dock Sud channel expansion. East morro removal.
Description	Remodeling by blasting and dredging of the existing morro and casted wall of Hº Aº.
Amount	8.226.800
Vol m3	133.000



Dock Sud shipside West morro

Where	Buenos Aires, Argentina.
Work	West morro shipside removal Dock Sud, Exolgan.
Description	Remodeling by blasting and dredging of the existing morro and casted wall of Hº Aº.
Amount	1.822.000



OTHERS



Coal and Oil Port in Punta Loyola.

Where Santa cruz.

Description The port work was designed as docking port, advanced, towards the sea, consisting of a dock with a mooring front, dolphin and their mooring towers; a viaduct earth bonding for motor vehicles, coal conveyor ribbons and pipes according to the requirements of Y.C.F. and Y.P.F.

Amount 116.576.500

