



SUPERCEMENTO

PRINCIPAL WORKS

INDEX

SANITATION & DRINKING WATER -----	3
WATER TREATMENT PLANTS -----	3
Acueduct Centro Oeste	Drinking Water Treatment Establishment San Martín
AQUEDUCTS -----	3
Ruta nacional nº 168	Trelew acueduc
SANITATION - SEWAGE WATER -----	4
PLANT- COLLECTORS -----	4
Sanitation sewer, Posadas	Sewage Drain, La Matanza
EMISSARIES -----	4
Submarine emissarie Mar del Plata	
ARCHITECTURE -----	5
Formosa	Presidency Roque Sáenz Peña
HOSPITALS -----	5
Interzonal Hospital El Cruce	Child and maternal Hospital Gregorio Laferre
HYDRAULICS- FLOOD CONTROL DAMS -----	6
Hidroelectric Complex Yacyreta	
PLUVIAL DRAINS AND IRRIGATION -----	6
Canalization Cañada Las Horquetas	Lagunar Gómez
VIALS- BRIDGES -----	7
Ruta Nacional nº 12	Ruta Nacional nº 168
ROUTES -----	7
Circunvalación Oeste	Ruta Nacional nº 12
ENERGY- GAS PIPELINE -----	8
Gas pipeline Mesopotámico	Gas pipeline La Pampa
OIL EXPLOITATION -----	8
Oil explotation Refugio Tupungato	
TUNNELS -----	9
Subterranean River Paitoví	Potabilisation Establishment Area Norte
Main Sewer Santa Fe City	
COASTAL TREATMENT -----	10
Coastal Protection	Coastal Protection
WORKS -----	10
Coastal Protection	Defense Barrancas Campos de la Gloria
PRIVATE WORKS- CONCESIONS -----	11
Coal and oil Port in Punta Loyola	

SANITATION & DRINKING WATER

WATER TREATMENT PLANTS

Acueducto Centro Oeste

Where Santa Fe, Argentina.

Work Centro Oeste aqueduct construction.

Description Digging for foundations: 325,000 m3.
Filling soil: 244,900 m3.
Concrete: w / Elem. premolded: 854m3.
Concrete structures: 8,560 m3.
Water treatment plant capacity: 242 l / sec.
Intake works, H^e A^e viaduct 250 m long and forebay.

Amount 47.687.750



Drinking water treatment establishment San Martín

Where Buenos Aires, Argentina.

Expansion of the drinking water establishment on San Martín.

Work

Description Dredging of the trench, placement and covered of prefabricated elements of the duct, plus the construction and placement of the intake tower. Dredging for placement concrete pipe founded on trench piles under water.

Amount 36.474.000



AQUEDUCTS

Ruta Nacional n°168

Where La Pampa, Argentina.

Work Intake works and water supply for the 1st Stage of under irrigated production project in Casa Piedra.

Description Supply and placement of pipe for irrigation and intake works.

Amount 61.143.881



Acueducto Trelew

Where Puerto Madryn, Chubut, Argentina.

Work Acueducto Trelew optimization.

Description Acueducto construction, water intake, pumping station and complementary works.

Amount 17.147.888



SANITATION - SEWAGE WATER

PLANT- COLLECTORS

Sanitation sewer, Posadas

- Where** Misiones, Argentina.
- Work** Construction of the principal sanitation sewer system and electric and water infrastructure in Posadas.
- Description** Sanitation system construction of the city of Posadas y bridge construction de Hº over Arroyo Mártires.
- Amount** 13.121.633



Sewage drain, La Matanza

- Where** Buenos Aires, Argentina.
- Work** Complementary works of sewage drain.
- Description** Complementary works construction of sewage drain networks. Access chamber in HºAº and special steel parts, tunnel liner crosses Ø 1800 of streams, roads, highways and Railroad - 410 m total.
- Amount** 13.701.124



EMISSARIES

Submarine emissarie Mar del Plata

- Where** Buenos Aires, Argentina.
- Work** Submarine emissarie construction on Mar del Plata.
- Description** PEAD pipe Ø 2000 mm - 4,100 meters.
Breakwater: 300 m/l (with 50 mts of gravel and 250 mts of stone 535 and 715 kg/m respectively)
947 Units Weights Concrete.
Pumping Station, Spillway, Flow System measurement, 129
Discharge mouth to Ø 150 and one of Ø 300 at the end.



ARCHITECTURE

Formosa

Where	Formosa, Argentina.
Work	1,000 houses, infrastructure and community equipment.
Description	Construction on a covered area of 69,500 m2. Architectural project: Manufacture and assembly of precast elements. Foundations: Design and construction of community equipment in traditional construction.
Amount	28.520.000



Presidency Roque Sáenz Peña

Where	Chaco, Argentina.
Work	770 houses, infrastructure and community equipment on Presidency Roque Sáenz Peña.
Description	Construction on a precast total area of 57,000 m2. Project and execution of the community equipment in traditional construction.
Amount	31.700.000



HOSPITALS

Interzonal Hospital El Cruce

Where	Buenos Aires, Argentina.
Work	Construction and equipment Interzonal Hospital El Cruce of Florencia Varela.
Description	Construction, equipment and complementary works.
Amount	33.471.218



Child and maternal Hospital Gregorio Laferre

Where	Laferre, Buenos Aires, Argentina.
Work	Child and maternal Hospital Gregorio Laferre.
Description	Child and maternal hospital construction, complet equipment: Gastronomic, laundry and medical. Landscaping. Complementary works.



HYDRAULICS- FLOOD CONTROL DAMS

Hidroelectric complex Yacyreta

Where Argentina - Paraguay.

Work Hidroelectric complex Y-C1 contract: principal dam construction, hidroelectrical central and complementary works.

Description Dam and sides dams of compact filled over Paraná river with navigation lock, landfill for 55,00 m³/seg. Flow and hidroelectrical central with 20 U. 160,000 Kw each one generator.

Amount 1.429.000.000



PLUVIAL DRAINS AND IRRIGATION

Canalization Cañada Las Horquetas

Where Buenos Aires, Argentina.

Work Canalization ravine Las Horquetas. Stage III- 2nd tract.

Description Channel flood evacuation.

Amount 4.448.814



Lagunar Gómez

Where Buenos Aires, Argentina.

Work Regulation of Lagunar Gómez - Capricho- Rocha system. Stage I. 1st tract.

Description Channel linking extension Lagunar Gómez y Carpincho, Partido de Junín. Sewerage, drainage, bridges and forestation in circunvalación Ave.

Amount 7.132.128



VIALS- BRIDGES

Ruta Nacional n° 12

Where	Entre Ríos, Argentina.
Work	Paraná Guazú - Ceibas tracks of National Route n° 12.
Description	Refulado sand embankment of 24 Km. length by dredges, compaction, Large diameter sewer construction and 15 prestressed bridges H.A.
Amount	74.980.000
vol m3	14.000.000



Ruta Nacional n° 168

Where	Santa Fe, Argentina.
Work	Begining section over Colastiné river on National Route n° 168, subfluvial tunnel access and proyect & construction of 2nd road.
Description	Road construction, 5 bridges and complemetary works.
Amount	61.143.881



ROUTES

Circunvalación Oeste

Where	Santa Fe, Argentina.
Work	West circunvalación and north access to the city of Santa Fe. 2nd stage: Paviments.
Description	Paviment construction.
Amount	25.877.063



Ruta Nacional n° 12

Where	Misiones, Argentina.
Work	Terceras Trochas construction on National route n° 12 (Km 1.730,083 - 1.594,400)
Description	Complete construction of Terceros Trochas.
Amount	37.470.950



ENERGY- GAS PIPELINE

Gas pipeline Mesopotámico

Where Entre Ríos, Argentina.

Work Gas pipeline Mesopotámico.

Description Gas pipeline project and construction. Subfluvial crossing of the Paraná river with an 24" diameter and 32 km length duct, buried under water crossing 3 rivers and wetlands areas.

Amount 49.805.000



Gas pipeline La Pampa

Where La Pampa, Argentina.

Work Supply and distribution of natural gas in several locations.

Description Gas pipeline reinforcement of 10 Ø - Length 10,5 km.

Amount 3.125.000



OIL EXPLOITATION

Oil Explotaiton Tupungato

Where Mendoza, Argentina.

Work Oil exploitation in Yacimiento Refugio Tupungato.

Description Primary exploitation and secondary recovery operation of oil. Design and execution of facilities for secondary recovery and conditioning of wells.

Amount 282.000.000



TUNNELS

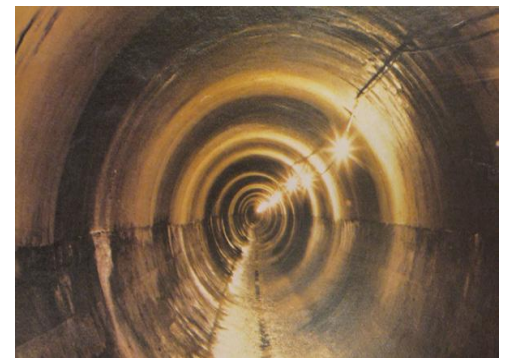
Subterranean River Paitoví

Where	Buenos Aires, Argentina.
Work	Subterranean River Paitoví, Lanús. Track III, Cruce Riachuelo.
Description	Linnel tunnel on simply H, Ø 3,8 and 2,800 m length. Excavation with machine tunnel with 18 m average depth under compressed air.
Amount	20.042.000



Main Sewer Santa Fe City

Where	Santa Fe, Argentina.
Work	Main Sewer Santa Fe City.
Description	General collector. Drive pipe. Main sewer and download. Pipe tunnel 1700 mm diameter. Low compressed air at 12 m average depth and 3.4 km length. Steel pipe impulsion 1500 and 1000 mm diameter. Main sewer HA diameter 1500 mm.
Amount	25.530.000



Potabilisation Establishment Area Norte

Where	Buenos Aires, Argentina.
Work	Potabilisation establishment Noth Area.
Description	Water Treatment Plant Paraná de las Palmas, Hydrant Dam Lujan, aqueducts: Río Luján Planta Tigre, Tigre Planta (Tiger center), Tigre Benavidez. Hydrant Parana de las Palmas, duct hydrant Parana de las Palmas. Tunnel Paraná de las Palmas - Dam Lujan Ø 3.600 L 14,650 m.



COASTAL TREATMENT

Coastal Protection

- Where** Misiones, Argentina.
Work Coastal protection of Posadas, Garupa and Candelaria.
Description Posadas area, El brete in works.



Coastal Protection

- Where** Misiones, Argentina.
Work Coastal protection of Posadas, Garupa and Candelaria.
Description Posadas area coast over Arroyo Mártires.



WORKS

Coastal Protection

- Where** Misiones, Argentina.
Work Coastal Protection of Posadas; Garupa and Candelaria.
Description Posadas area, El brete: finished works.



Defensa Barrancas Campos de la Gloria

- Where** Santa Fe, Argentina.
Work Defensa Barracas Campos de la Gloria.
Description Building defenses and protections. Storm drain system, urban infrastructure and complementary works.



PRIVATE WORKS- CONCESIONS

Coal and Oil Port in Punta Loyola.

Where Santa cruz.

Description The port work was designed as docking port, advanced, towards the sea, consisting of a dock with a mooring front, dolphin and their mooring towers; a viaduct earth bonding for motor vehicles, coal conveyor ribbons and pipes according to the requirements of Y.C.F. and Y.P.F.

Amount 116.576.500

